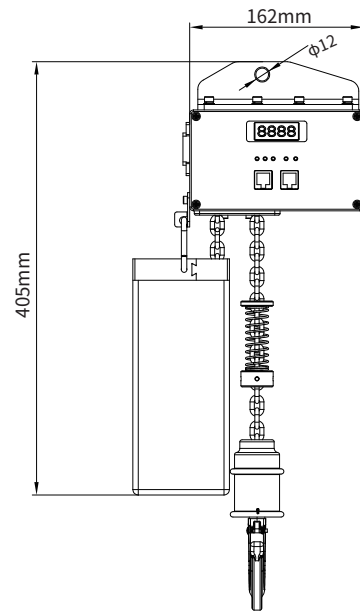
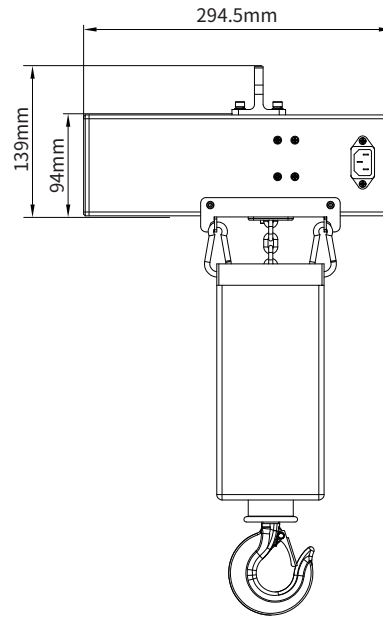


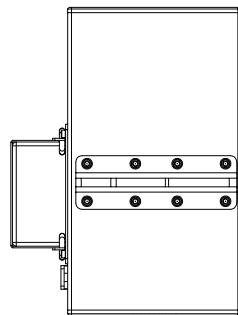
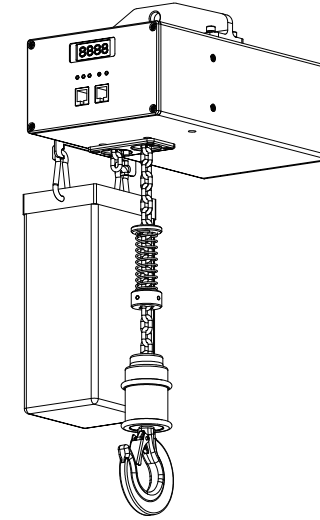
GCRT-1012 Hoist Appearance Diagram:



Front View



Side View

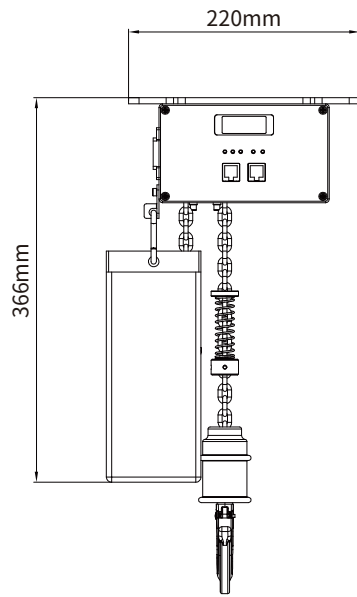


Top View

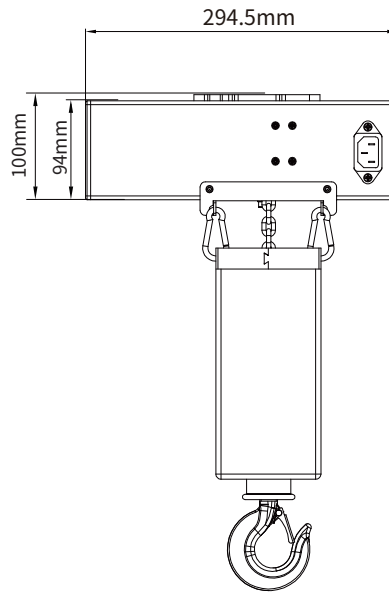
Specifications

- Product: Electric Chain Hoist with Numerical Control
- Model:GCRT-1012
- Size: W294.5xD162xH405mm
- Installation Method: Can be mounted upright, depending on requirements.
- Ceiling open size: $\phi 175\text{mm}$
- Loading capacity: 100Kg
- Max dropping distance: 12 Meter
- Input Voltage: AC220V/50Hz
- Power rating: 45W
- Control: RS-485/Dry Contact/Wall Switch

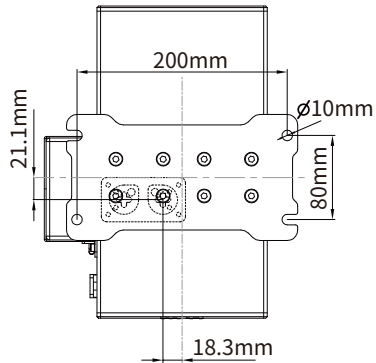
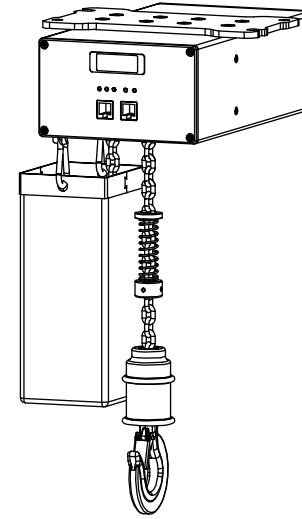
GCRT-1012 Hoist Appearance Diagram:



Front View



Side View



Top View

Specifications

Product: Electric Chain Hoist with Numerical Control
 Model:GCRT-1012
 Size: W294.5x D220xH366mm
 Installation Bold Hole Size: W200xD80mm
 Ceiling open size: φ175mm
 Loading capacity: 100Kg
 Max dropping distance: 12 Meter
 Input Voltage: AC220V/50Hz
 Power rating: 45W
 Control: RS-485/Dry Contact/Wall Switch